

PM-005 ROSE HANDLE



Metal : Aluminium
ROSE HANDLE

PM-006 ROSE HANDLE



Metal : Aluminium

PM-007 ROSE HANDLE



Metal : Aluminum

PM-012 ROSE HANDLE



Metal : Zinc
Finish: SS

PM-014 ROSE HANDLE



Metal : Zinc
Finish :AB

PM-011 ROSE HANDLE



Metal : Zinc
Finish :SS,AB

PM-021
SOLID ROSE HAND



Finish -SS MATT (SS-304)

PM-022 SOLID ROSE HANDLE



Finish -SS MATT (SS-304)

PM-015 ROSE HANDLE



(SS-304)

ROSE HANDLE KEY HOLE



Metal : SS

PKG= 20 SET

**PM-025 ROSE HANDLE
(MADE IN ITALY-BRASS)**



Finish -SS,AB

**PM-026
(MADE IN ITALY- BRASS)**



Finish-AB,SS

PM-028 ROSE HANDLE



**Metal : Zinc
Finish :AB**

PM-032 (ADS- P3)



**Metal : Zinc
Finish : SS**

PM-033 (ADS-P4)



**Metal : Zinc
Finish -SS/CP,SS**

PM-034 (ADS-C2)



**Metal : Zinc
Finish -SS**

PM-035 (ADS-F5)



**Metal : Zinc
Finish -SS**

PM-041 (MORTISE HANDLE FULL SET)



**Finish :SS/CP, SS/GP
Material :ZINC**

PM-043 ROSE HANDLE



**Finish :SS,ABM
Material : ZINC
Weight : 950 gram per set**

PM-045 ROSE HANDLE



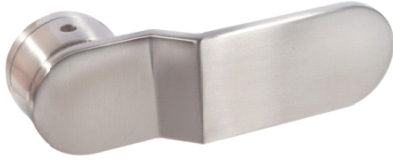
**Finish :SS,ABM
Material : ZINC
Weight : 850 gram per set**

PM-046 ROSE HANDLE



**Finish : SS, ABM
Material:ZINC
Weight:1100 gram per set**

PM-049 ROSE HANDLE



Material : Zinc
Finish : SS

PM-047 ROSE HANDLE



Finish : GOLD
Material : ZINC
Weight : 950 gram per set

PM-050 ROSE HANDLE



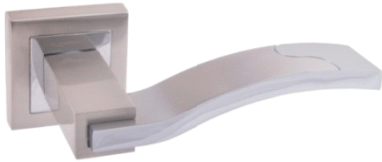
Material : Zinc
Finish : SS, ABM

PM-051 ROSE HANDLE



Material : Zinc
Finish : SS

PM-053 ROSE HANDLE



Material : Zinc
Finish : SS/CP

PM-055 ROSE HANDLE



Material : Zinc
Finish : ABM

PM-058 ROSE HANDLE



Material : Zinc
Finish : SS

PM-062 ROSE HANDLE



FINISH : BSN/MOP, CP/MOP

PM-063 ROSE HANDLE



Finish : CP .METAL- ZINC HANDLES

PM-064 ROSE HANDLE



finish: ss

PM-065 ROSE HANDLE



Finish : SN/CP

PM-067 ZINC ROSE HANDLE



Finish : SN/CP

PM-069 (ROSE HANDLE)



FINISH - SS

PM-070 (ROSE HANDLE)



FINISH - SS

PM-071 (ROSE HANDLE)



FINISH - SS

PM-072 (ROSE HANDLE)



FINISH - SS

PM-073 (ROSE HANDLE)



FINISH - SS

PM-074 (ROSE HANDLE)



FINISH - SS

PM-075 (ROSE HANDLE)



FINISH - SS

PM-076 (ROSE HANDLE) SS



FINISH – SS

PM-077 (ROSE HANDLE) SS



FINISH – SS

PM-005 MORTISE HANDLE



**Metal : Aluminium
MORTISE ALU.**

250 MM

PM-006 MORTISE ONLY HANDLE



MORTISE ALU.

**Metal : Aluminum
45~85 lock body suitable**

250 MM

PM-005MORTISE HANDLE



**Metal :Aluminium
MORTISE ALU.FULL SET**

150 MM

PM-006MORTISE HANDLE



**Metal :Aluminium
MORTISE ALU.FULL SET**

150 MM

PM-007MORTISE HANDLE



150 MM FULL SET

**PM-025
MORTISE HANDLE
(MADE IN ITALY-BRASS)**



**Metal : Brass
Finish -SS,AB**

**PM-026MORTISE HANDLE
(MADE IN ITALY-BRASS)**



Finish –AB,SS

PM-036 MORTISE HANDLE



**ONLY HANDLE
FOR 45 X 85 LOCK BODY
PLATE SIZE:35X220 MM
Material :ZINC
Finish –SS/CP ,SS/GP**

♣ PM-009 ♣ MORTISE HANDLE
MAIN DOOR HANDLE FULL SET
PINCYLINDER 70 MM



INSIED OUTSIDE

Metal : zinc
Finish - SS/CP

PM-038 MORTISE HANDLE



ONLY HANDLE
FOR 45 X 85 LOCK BODY
PLATE SIZE: 252 MM
Material : ALU+STEEL
Finish : AB

PM-039 MORTISE HANDLE



ONLY HANDLE
FOR 45 X 85 LOCK BODY
PLATE SIZE: 52X252 MM
Material : ALU+STEEL
Finish - SS/GP

PM-040 MORTISE HANDLE



FOR 58 X 48 LOCK BODY WITH PNCYLIDER
PLATE SIZE : 47X200 MM
Material : ZINC
Finish - SS/GP, SS/CP, FULL SET

PM-043 MORTISE HANDLE PLATE



Finish : SS, ABM
Material : ZINC
Size : 235 MM
Weight : 950 gram per set

new items website : www.princepolo.in[92]

AD-91 LEVEL HANDLE



Metal: Zinc
Finish – AB,S.S

AD-92 LEVEL HANDLE



Metal: Zinc
Finish – S.S

ADS-C1 LEVEL HANDLE



Metal: Zinc
Finish – SS/CP

ADS-B9 LEVEL HANDLE



Metal: Zinc
Finish -NB/CP

LL-031
DOOR LOCK FULL SET



Metal: Zinc
Finish -S.S

LL-032
DOOR LOCK FULL SET



Metal: Zinc
Finish -S.S